



Sage

POS 2013

Business Made Simple

sage



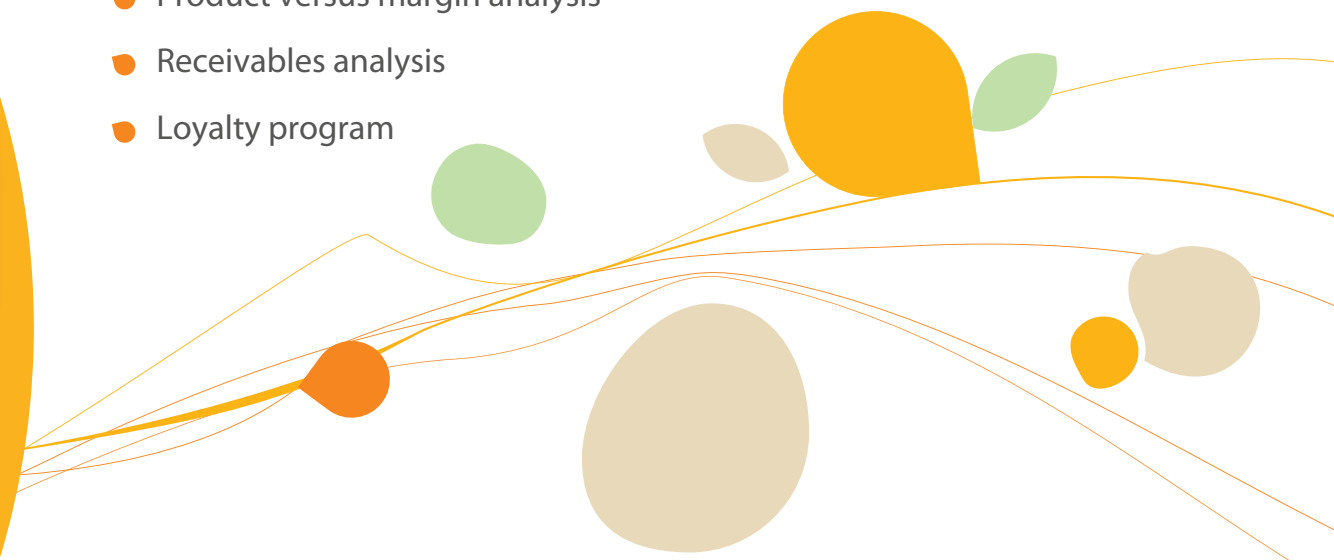
## Sage POS 2013

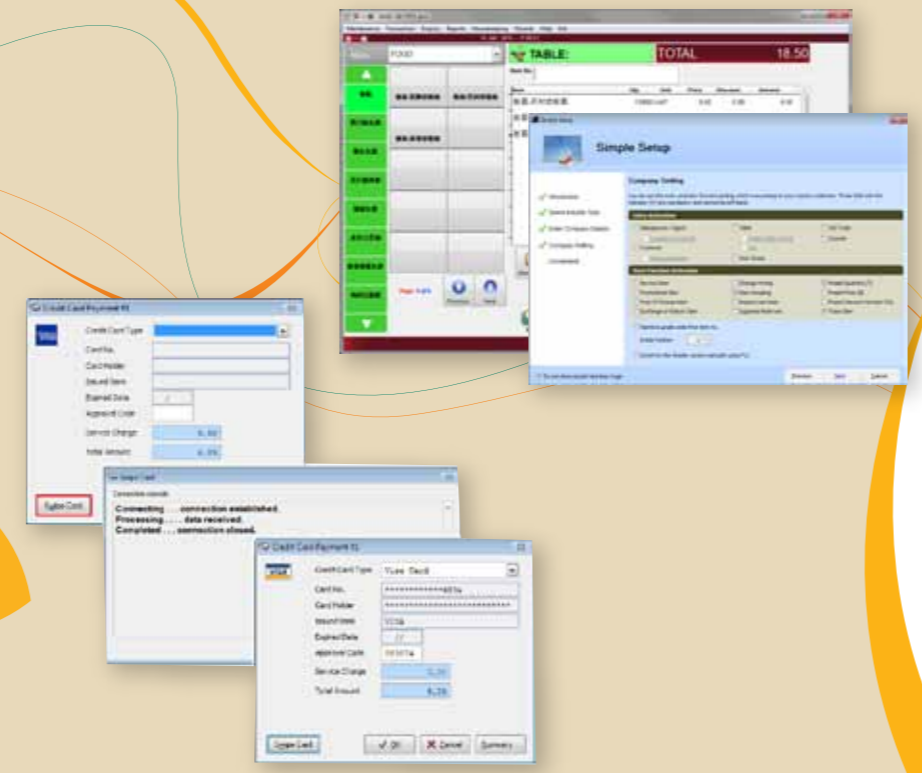
Sage POS 2013 is the latest version of the POS solution from the developers of the popular Sage UBS Accounting software, making it part of a proven series of software solutions.

Sage POS 2013 is simple to use and works with plug and play barcode scanners. Now with touch screen technology, sales transactions can be registered in a few steps, making it very suitable for small retailers, restaurants and food & beverage outlets.

Sage POS 2013 is one of the first local products to be integrated directly to Electronic Credit Card Terminals (ECCT), therefore sales transactions involving credit and / or debit cards can be processed quickly thus saving time and reducing errors. Sage POS 2013 makes it easy to monitor credit card sales and daily financial returns, leaving you more time to serve your customer and improve sales.

Sage POS 2013 comes with many configurable features. Some are listed below :

- Inventory management providing up-to-date stock
  - Information at the retail outlet
  - Sales personnel performance analysis
  - Peak customer period analysis
  - Product versus margin analysis
  - Receivables analysis
  - Loyalty program
- 
- A decorative graphic on the right side of the page, featuring several overlapping circles in shades of orange, yellow, green, and grey, connected by thin, flowing lines that create a sense of movement and connectivity.



### Quick Start with Wizards as a guide

- To help users through the setup process and get started on sales quickly
- To help users create new personnel files for different titles or categories such as supervisor, cashier and others

### Touch Screen Support

- Intuitive and simple to use
- Reduces input time for each transaction

### Electronic Credit Card Terminal integration

- Makes processing credit and / or debit cards payment a breeze

In addition to efficient handling of front line sales, when POS 2013 is integrated to the widely accepted Sage UBS Inventory & Billing and Sage UBS Accounting modules, users can gain more insight into their business and therefore make better decisions to expand their business or improve profitability.

Features / Modules	Remarks
POS Model	
POS 2013	Software Online license activation
Hardware	
Device	Can be used with a wide range of devices, including receipt printers, barcode scanners, cash drawers and POS display
Software – System	
Availability	Standalone Integration to Sage UBS Inventory & Billing and / or Accounting system
Software – Features General System Management	
Language	Supports multiple languages
Counter Controls	Supports multiple languages

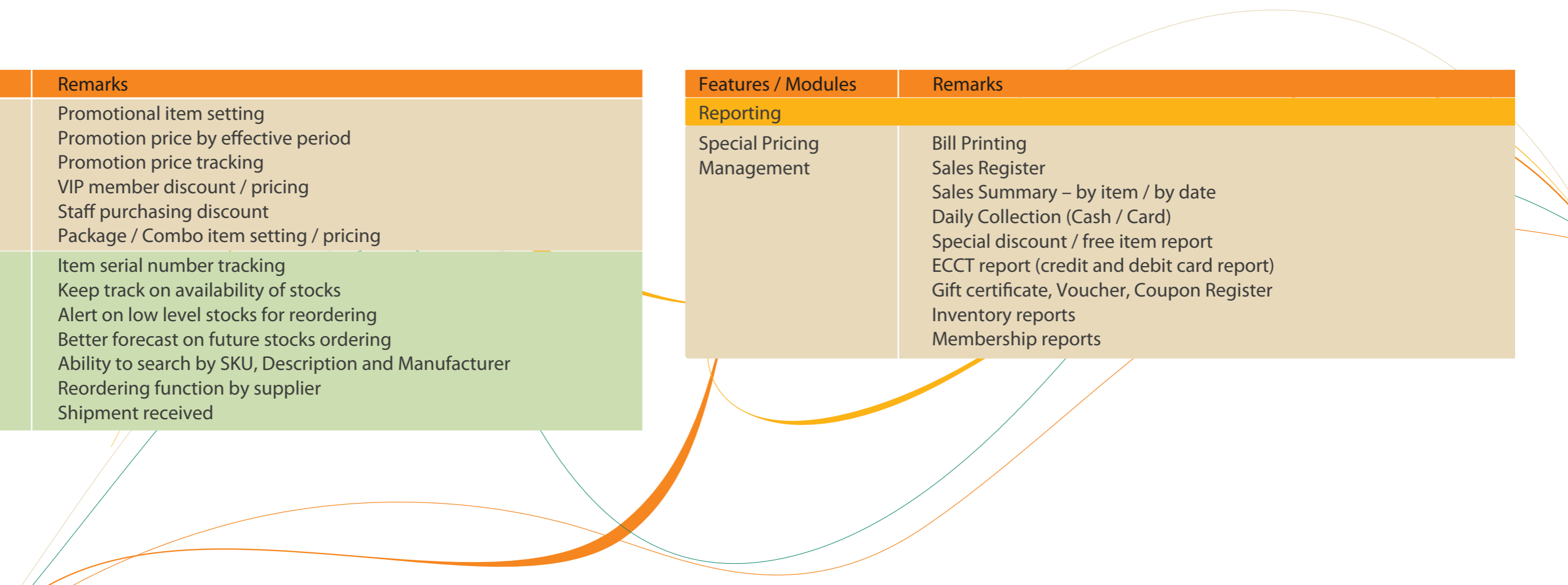
Features / Modules	Remarks
User Controls	<ul style="list-style-type: none"> <li>● Item pricing check</li> <li>● Preview of previous / next receipt</li> <li>● On-hold sales / receipt</li> <li>● Receipt print / reprint</li> <li>● Interface with Electronic Credit Card Terminals (ECCT)</li> <li>● Sales Order / Lay-by (on short credit term)</li> <li>● Stock receive, transfer, adjustment</li> <li>● Cancel / Void Control <ul style="list-style-type: none"> <li>○ Keeping track of cancelled transactions and cancelled items</li> <li>○ Traceable with cashier code and duration (audit trail)</li> </ul> </li> </ul>
Employee / User Controls	<ul style="list-style-type: none"> <li>● Setting of rights for group / function options <ul style="list-style-type: none"> <li>○ Item price overwrite with approval</li> <li>○ F.O.C. given with approval</li> <li>○ Item discount (% or amount) void</li> </ul> </li> <li>● Display and form layout</li> <li>● Status alerts</li> <li>● Password protection</li> <li>● Multi-level security control</li> <li>● Time clock</li> <li>● Commission</li> </ul>

Features / Modules	Remarks
Membership Controls	Supports multi-levels member groups (eg. Silver, Gold, Platinum) Loyalty points and redemption Reports on birthdays, membership renewal, promotions, signed-up package, etc
Promotion / Discount Controls	Supports various types of discounts: a. Total discount based on Value b. Total discount based on Percentage c. Item discount based on Value d. Item discount based on Percentage
Policy (Scheme)	Supports manual input / scan of multiple settlement instruments: - Gift Certificate - Voucher - Coupon (F.O.C. and discounts)
Points Collection	Item points / redemption
<b>Specific to Restaurant / Food &amp; Beverage POS</b>	
F&B Item Controls	Supports special requests (less sugar, more ice, more sauce, etc)
Table Ordering	Supports multiple ordering terminals / cashiers Supports customer ordering system where each table is installed with the system for customer to place their own orders

Features / Modules	Remarks
<b>Customer Tracking</b>	
Customer Information	Predefined remark / customer display message Reports on members birthdays, promotions, signed-up package, special preferences, etc
Transaction History	Track sales to analyse spending pattern to support marketing campaigns or special offers Track popular items and sales trends to take advantage of opportunities and trends
<b>Inventory</b>	
Group Items by Set Criteria	Item bundling where few items are bundled to become 1 item and system able to deduct all the relevant items accordingly. Very useful for hampers and gift sets Item Matrix where item comes with multiple colours and sizes. System able to generate all related barcode automatically Purchase with Purchase (PWP) – system is able to support various types of PWP schemes
Photo Image	Allows display of item image on screen or even printout on Cash Bill (eg. Diamond ring or pendant)

Features / Modules	Remarks
Special Pricing Management	Promotional item setting Promotion price by effective period Promotion price tracking VIP member discount / pricing Staff purchasing discount Package / Combo item setting / pricing
Real-time Inventory Tracking	Item serial number tracking Keep track on availability of stocks Alert on low level stocks for reordering Better forecast on future stocks ordering Ability to search by SKU, Description and Manufacturer Reordering function by supplier Shipment received

Features / Modules	Remarks
Reporting	
Special Pricing Management	Bill Printing Sales Register Sales Summary – by item / by date Daily Collection (Cash / Card) Special discount / free item report ECCT report (credit and debit card report) Gift certificate, Voucher, Coupon Register Inventory reports Membership reports





## Software Assurance

### Sage Cover

Sage Cover is a software assurance designed specifically for the users of our software solutions. It is derived from the important objective of protection in your use of Sage products.

Sage Cover

When you have an active Sage Cover, you will enjoy the following benefits.

- Value Protection of Your Investment
- Ensuring You Are Always Updated
- Continuous Learning
- Self Service



Because Sage Cover is so important, we have included the 1st year of Sage Cover in every new Sage software product purchased with compliments from us!

**Vivid Solutions Sdn Bhd** (1139907-D)

B6-11, Block B, Plaza Dwtasik,  
Jalan Sri Permaisuri, Bandar Sri Permaisuri,  
56000 Kuala Lumpur, Malaysia.

Tel: 03-91722228 Fax: 03-91722229

Website: [www.vivid.com.my](http://www.vivid.com.my)



**Want to find out more?**



Call Us On 03-91722228



[www.vivid.com.my](http://www.vivid.com.my)



[infor@vivid.com.my](mailto:infor@vivid.com.my)